
USB Driver Installation

MAG-TESTER REVO



Barnes International Ltd.

The Loft
St Clair's Farm
Wickham Road
Droxford
Hampshire
SO32 3PW

Tel: (+44) (0) 1730 231313

Fax: (+44) (0) 1730 265353

Email: support@barnestest.com

Contents

Connect the Hardware..... 3

Manual copy of supplied file: 5

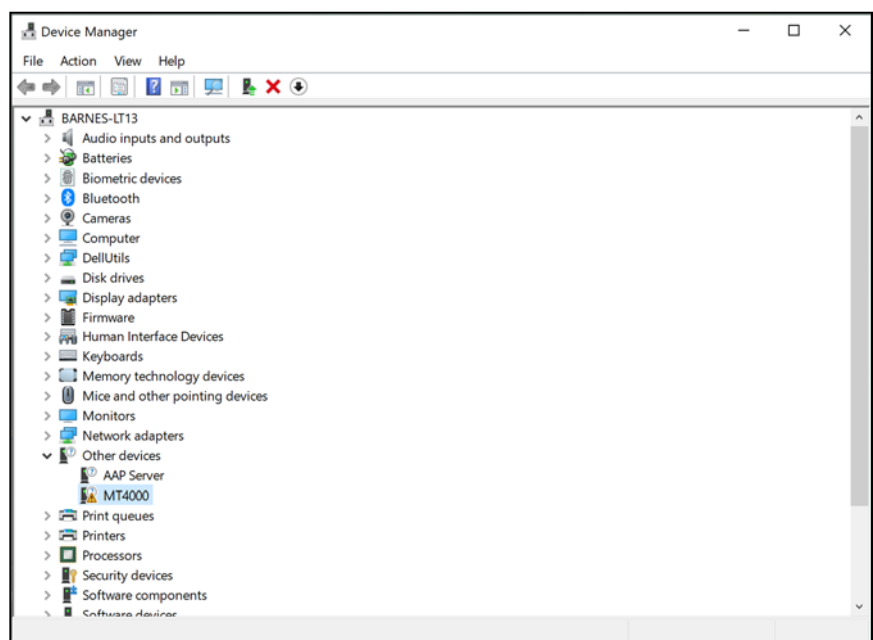
Set UAC settings to Never: 7

The Card Table – and Beyond 8

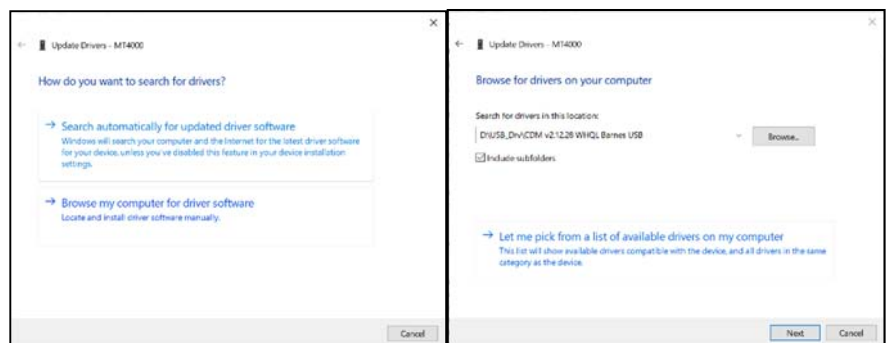
Connect the Hardware

Make sure that ALL Transport restraints have been removed from the Revo unit (these will be in place your Revo has just been returned from service), connect the mains supply and switch on using the rear panel switch. Then connect the USB cable between the PC and the Revo unit. Windows should now recognise that new hardware is connected and may request the driver. Close any request from Windows to install drivers automatically.

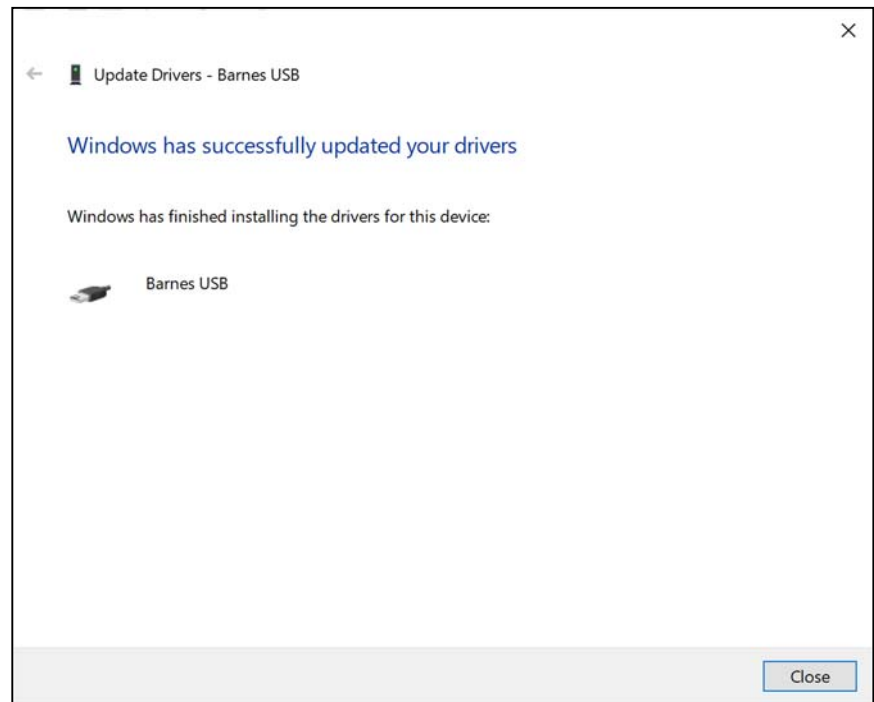
Open Device Manager you should see a new entry under “Other Devices” MT4000, right click MT4000 and select Update Driver Software from the context menu that appears:



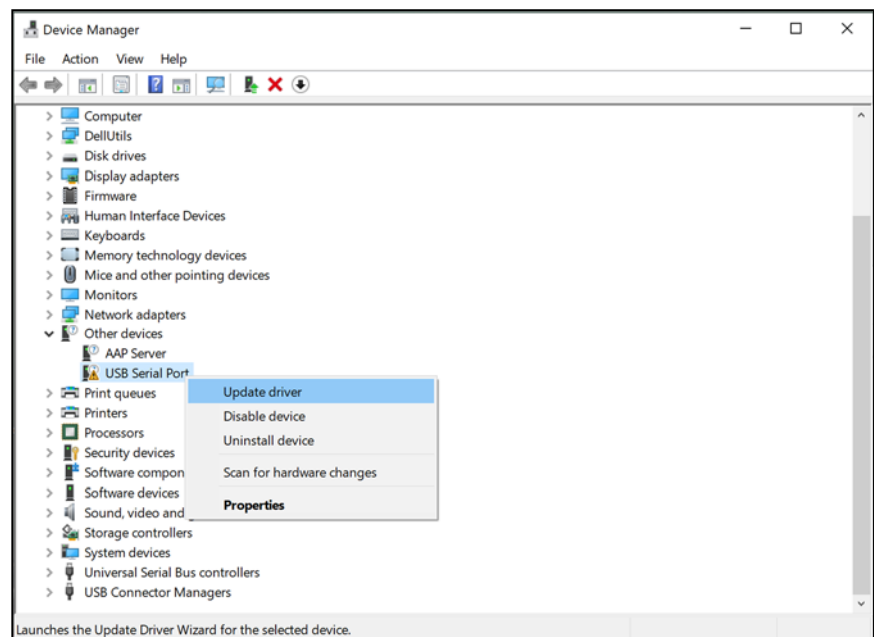
Select “Browse” and navigate to the location of the Driver supplied by Barnes.



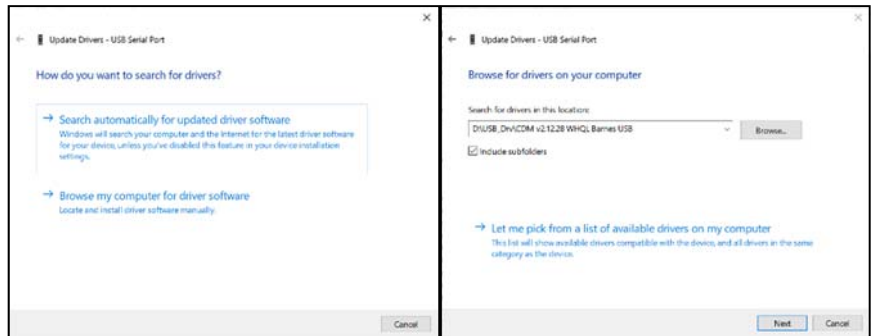
This will install the first driver and the MT4000 entry will change to USB Serial Port



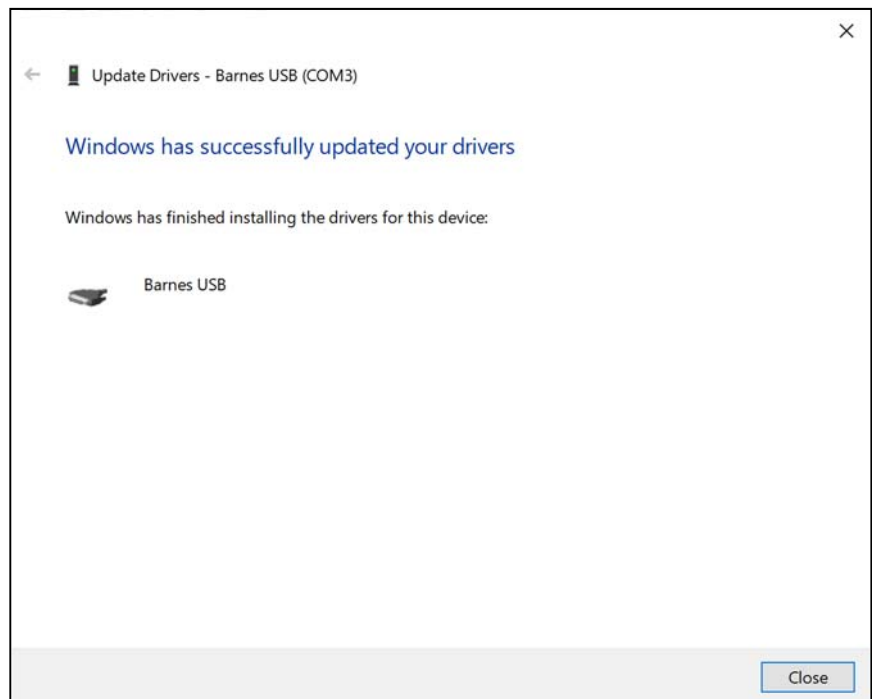
Repeat the process again for the USB serial port entry:



Select Browse and navigate to the location of the Driver supplied by Barnes.



You should now have a USB virtual serial port, note that the actual port number may be different.

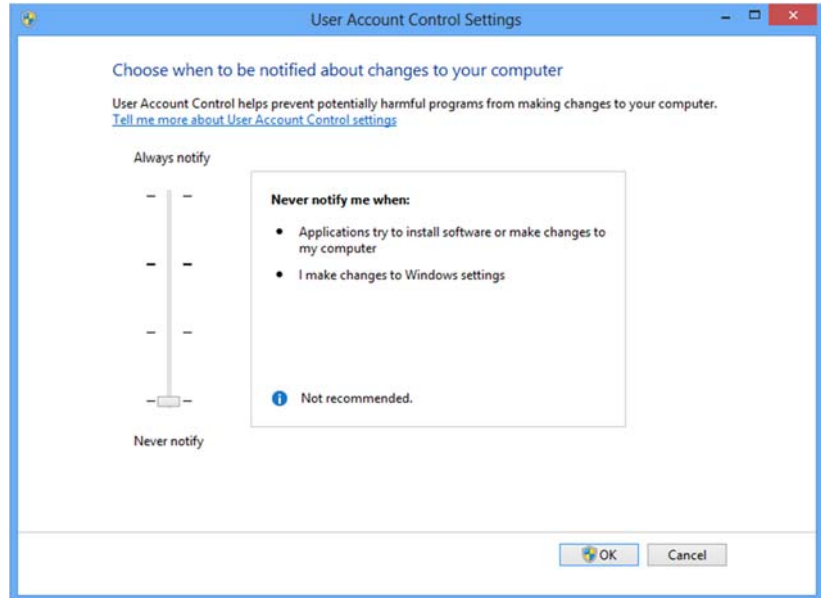


Manual copy of supplied file:

If updating drivers from an existing installation or software CD prior to 2021 it may be necessary to manually copy the supplied FTDXX.dll into your installed software folder replacing the existing copy, this is usually C:\REVO\

Set UAC settings to Never:

Back on the Metro Screen move the mouse cursor to the bottom right corner and select search, type UAC and then click settings and select “change user account control settings. Set this to “Never notify”



When the driver installation is complete, launch the Revo software as before, the authorisation code dialog will re-appear. Enter the authorisation code received from Barnes and click OK, you will now be prompted to enter a user name and password.

The Revo software is installed with a pre-enrolled single user, name and password are as follows:

Name: SYSTEM MANAGER
Password: SYSTEM MANAGER

Note that both name and password must be typed in upper case characters.

See “User Control” in the main software manual for information on how to change this password, if required, and also on how to enrol new users. There is more than one “type” of user; each different type has a different range of access to the system functions. Also facilities available to each user “type” can be changed as if required.

The software now has full control of the hardware and will display a warning that the transport will be moved. Double check that there are no obstructions and that all restraints have been removed, also check that the white plastic Card Table has not yet been fitted to the aluminium transport Platen, then click the flashing “Start Test” icon button in the top right corner of the screen. The transport will move to locate its position reference mark then move to the left and stop in the “Load” position.

On the very first occasion of starting the Revo software (after first ensuring the Revo is powered and the USB cable is connected) you may receive a yellow warning indicating the hardware is not connected, please close and restart the software to clear this warning. If you cannot select "never" when starting the Revo software for the first time, right click the icon and click "run as Administrator" allow the software to start and then restart it normally.

The Mag-Tester Revo is now ready for use; the first step is to ensure the yellow shim is positioned on the platen (**this shim MUST be fitted for normal use**) and then to fit the Card Table.

The Card Table – and Beyond

PLEASE NOW READ AND UNDERSTAND THE WHOLE OF THE MANUAL SECTION "WORKING WITH THE REVO –HARDWARE OPERATION/SET UP" WITHIN "GETTING STARTED" SECTION BEFORE FITTING THE CARD TABLE, WITH THE YELLOW PLASTIC SHIM IN PLACE, FOR THE FIRST TIME.